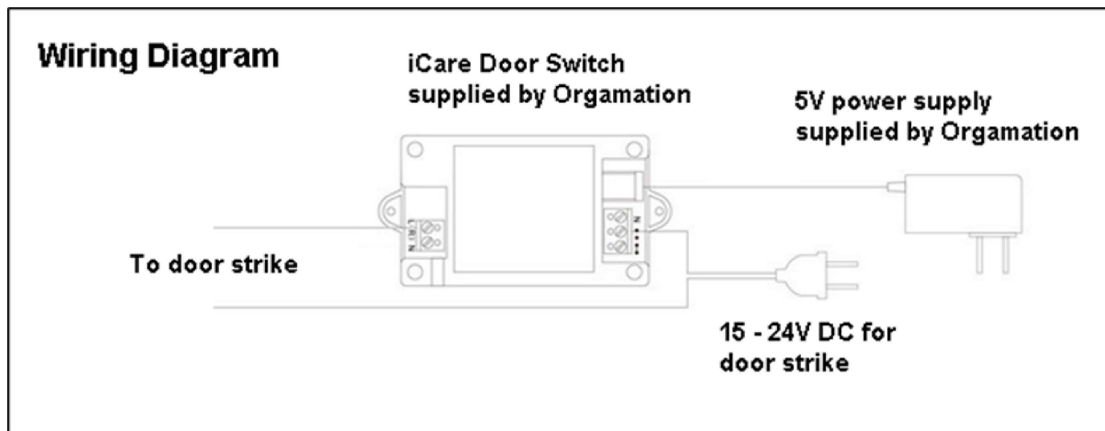


## I. Install the iCare Door Switch

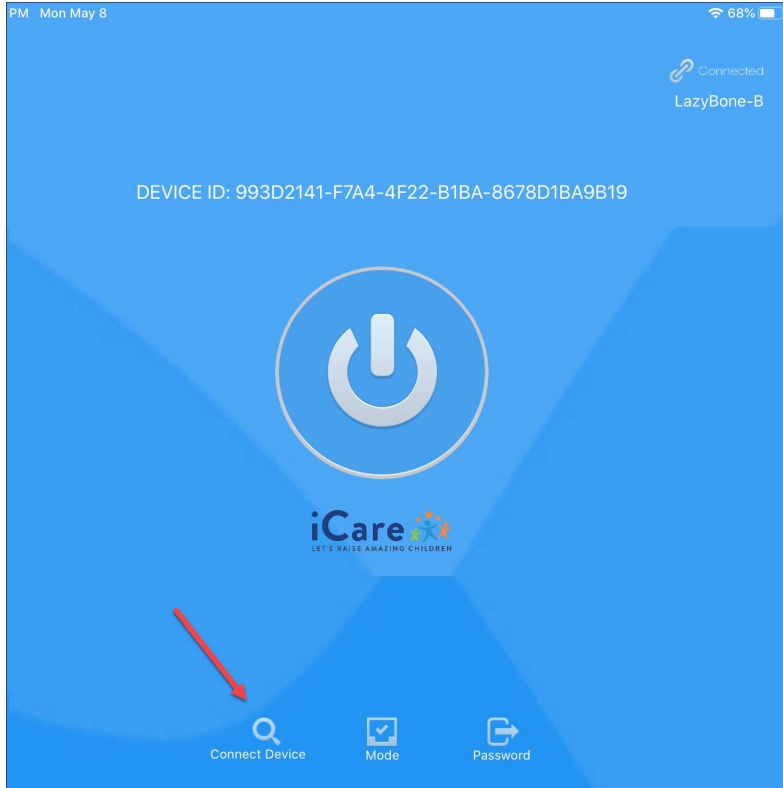
1. On a piece of paper write down the Password (Switch ID) given at the back of the iCare Door Switch. (You will need this to connect the Door App to the Door Switch.)
2. Mount the Switch behind the lobby wall near the door but out of reach for people walking in.
3. Finish the wiring as given in the diagram below. Please note the following tips:
  - a. On the left side connect the wire to the top screw
  - b. On the right side connect the wire to the middle screw
  - c. Make sure the power supply for the door strike is 15-24V DC only



## II. Install and Connect the iCare Door App

1. Download the iCare Door App from the Apple App Store on your iPad (it can be installed on an iPhone also)
2. Open the App on the iPad. Click on Connect Device given at the bottom of the screen.

iCare Door Installation (for iOS)  
5/10/2023

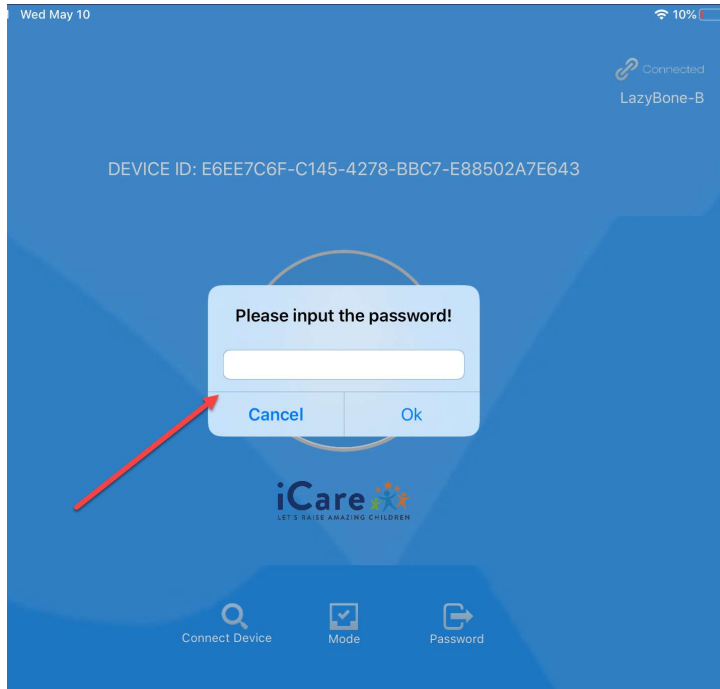


3. A list of available Bluetooth devices will show. Select LazyBone-B (or iCare Door, if available)

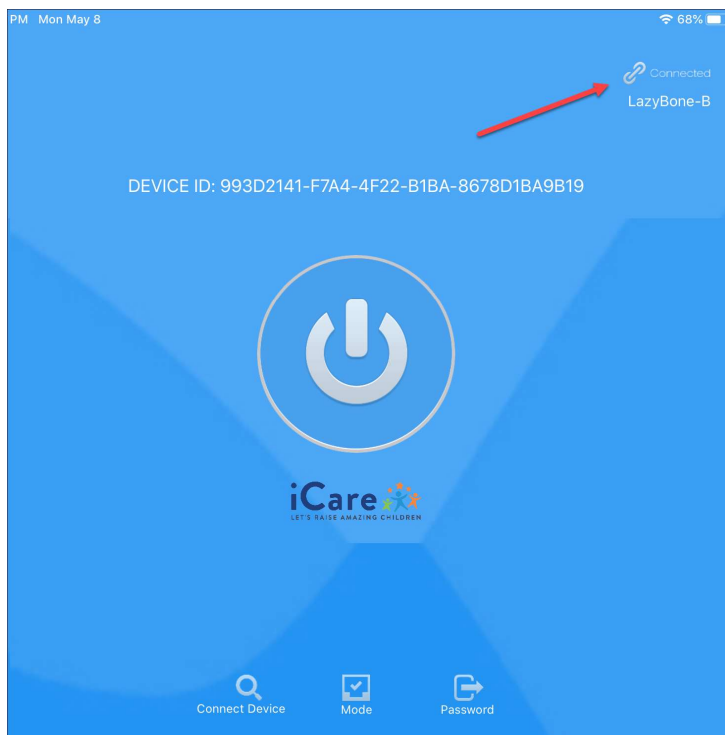
Back	Select BLE Device
	M10AQY5 >
	M234 LaserJet >
	LazyBone-B >
	M234 LaserJet >
	Inspire 2 >

4. Enter here the Password (Switch ID) you had written on the piece of paper.

iCare Door Installation (for iOS)  
5/10/2023

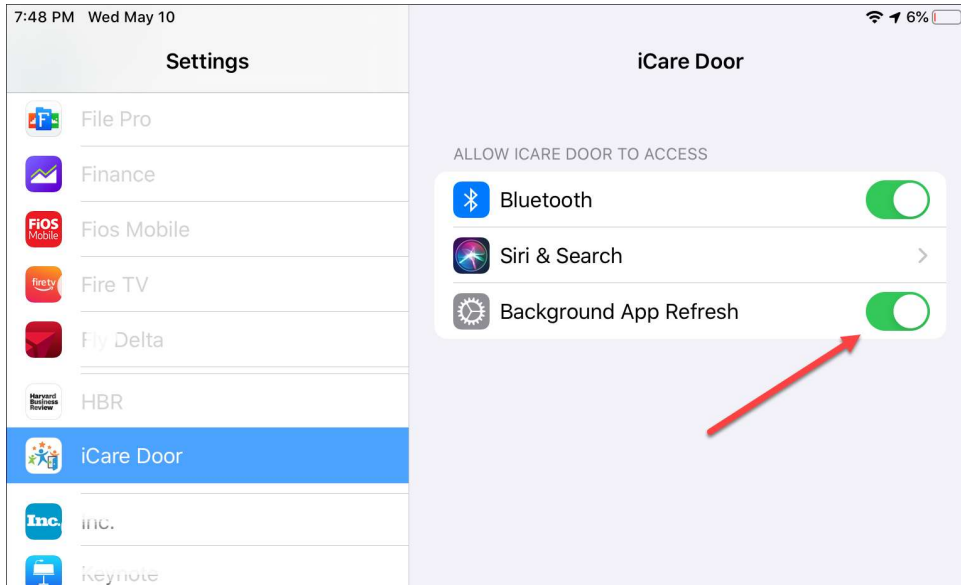


5. Click on Ok.
6. The Door App will now say Connected. (Make sure that this always says Connected and not Disconnected.)



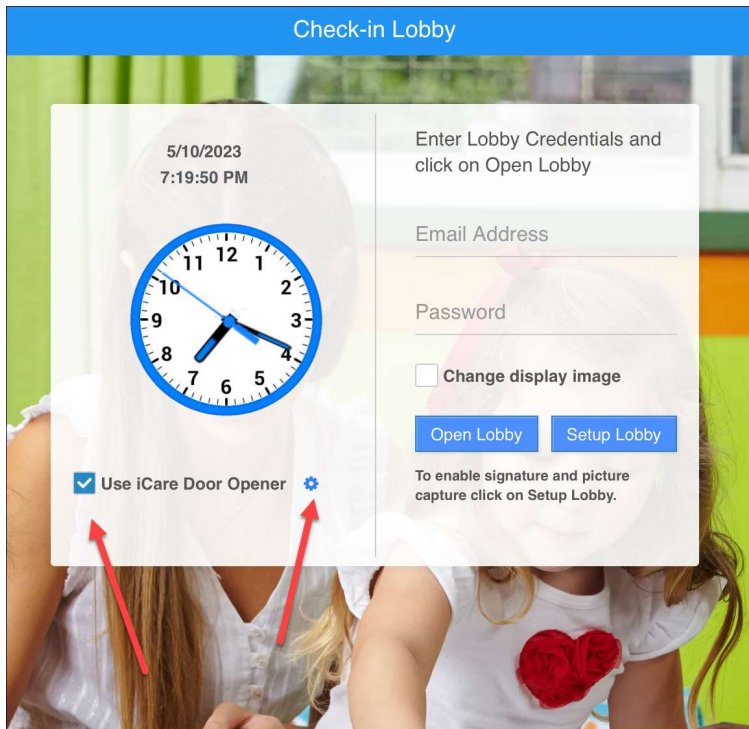
7. Go to Settings on the iPad (or iPhone) and tap on the iCare Door App. Turn ON Background App Refresh. (This will let the Door App/Switch work even when the iPad goes to sleep mode.)

iCare Door Installation (for iOS)  
5/10/2023



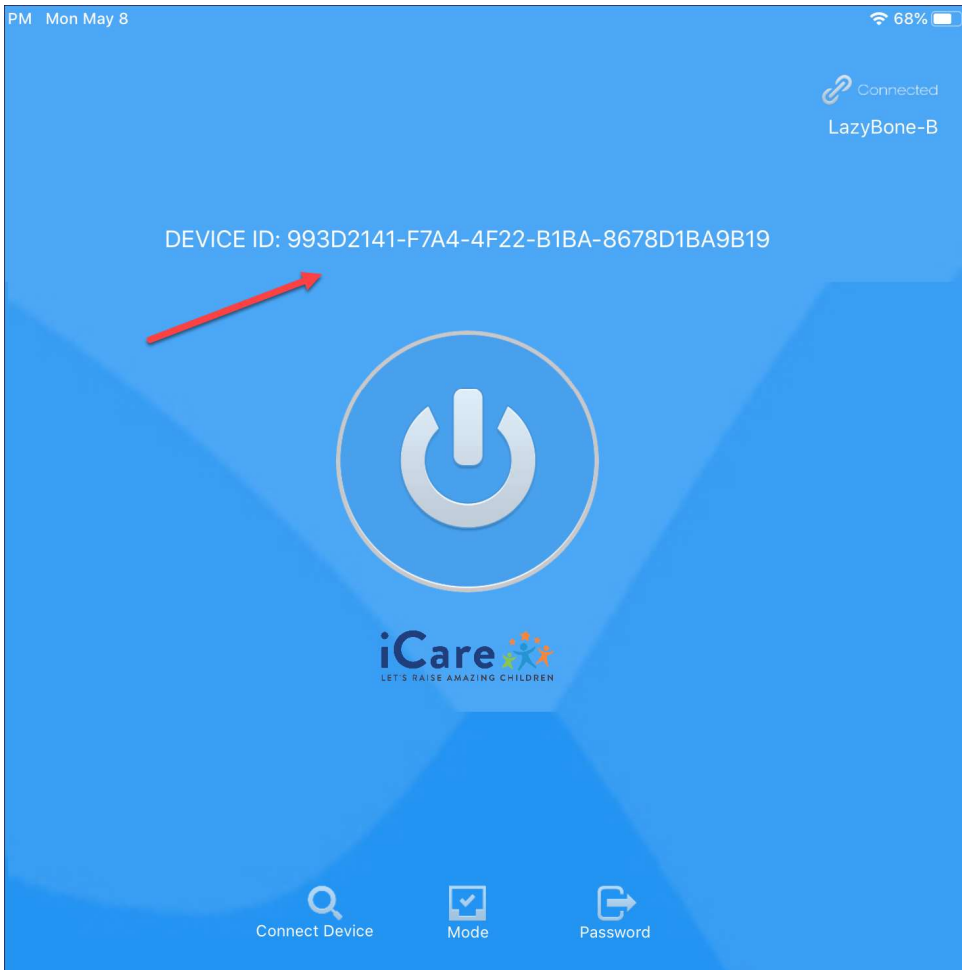
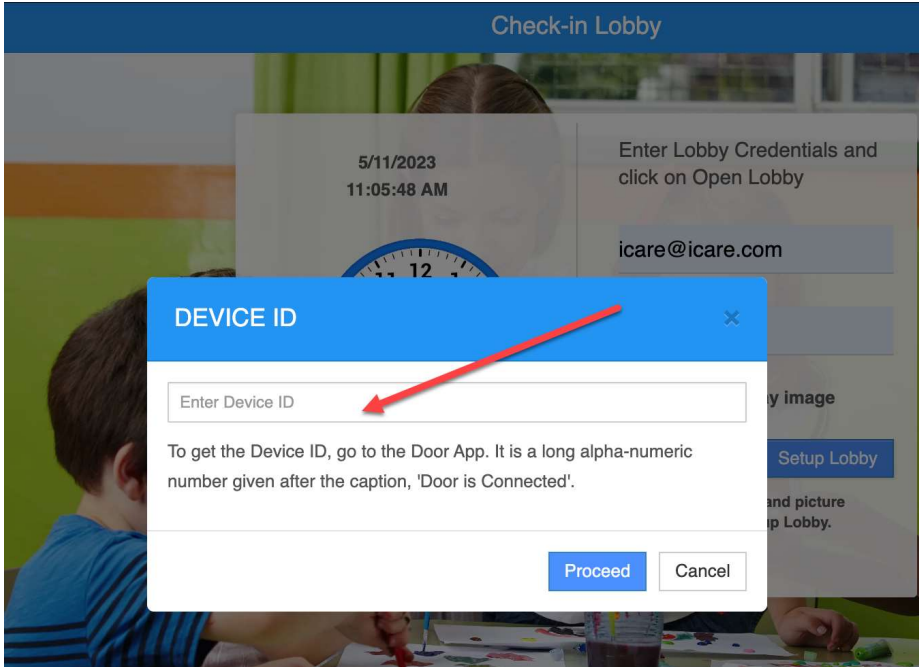
### III. Connect iCare Lobby App to the Door App

1. Open Chrome Browser on the iPad. (Other browsers may work without a problem but Chrome is recommended.)
2. In the address bar type, lobby.icaresoftware.com.
3. Check Use iCare Door Opener and tap on the Setting icon.



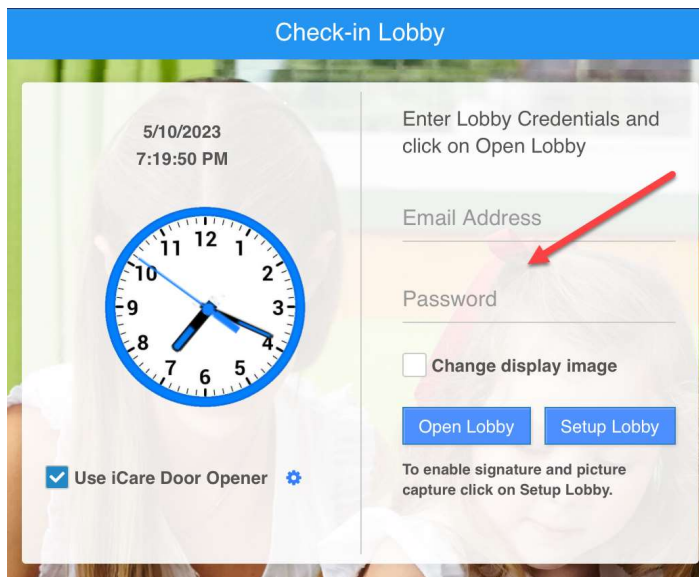
4. Enter Device ID as given in the Door App screen. Tap on Proceed.

iCare Door Installation (for iOS)  
5/10/2023



5/10/2023

5. Enter your Lobby Credentials and open the Lobby App. (Lobby credentials are given in your iCare App > Settings > Step 7.)



## When Does the Door Open?

The door will open when anyone checks in or out through the Lobby App, Check-In App, or Parent App.

The following conditions apply:

- Staff should be active.
- For parents and other contacts of children, in the Profile Page > Contacts Tab, the Can Pick Up flag should be ON.